



Access to the Sacred Mount is free of charge

#### HOW TO GET THERE

##### OPENING TIMES AND ENTRANCE

The Sanctuary is open 7 days a week from 7.00 a.m. to 7.00 p.m.  
The devotional path is always open

**By car from Milan:** take motorway A9 and exit Como Nord. Follow SS340 towards Menaggio till Località Ossuccio (Comune di Tremezzina). Follow Via degli Ulivi till the roundabout. Take the third exit and follow the road till Chapel IV where car parking is available. The walk from Chapel IV to Chapel I, where the path starts, is only a few minutes away.

**By train from Milan:** from the station of Milano Centrale to the station of Como San Giovanni. Take the C10 bus line and stop at località Ossuccio (Comune di Tremezzina). Continue walking along Via degli Ulivi till reaching the roundabout. Take the second exit. Follow Via Giovanni Castelli and then Via Pasquale Castelli to reach Chapel I in 20 minutes. It is just a few minutes-walk from Chapel IV to chapel I Cappella where the path starts.

From the station of Milano Nord Cadorna to the station of Como Lago. Continue by ferry with the Como-Colico line and stop at Lenno. Walk along Via Lungo Lago and reach Strada Statale Regina SS340. Cross the road and follow Via Silvio Pellico, then take Via Pasquale Castelli. Chapel I, where the path starts, is 30 minutes away.

Train: [www.trenitalia.com](http://www.trenitalia.com) - Bus: [www.asfautolinee.it](http://www.asfautolinee.it) - Ferry boat: [www.navigazionealghi.it](http://www.navigazionealghi.it)

#### INFORMATION

##### Santuario Madonna del Soccorso di Ossuccio

Via al Santuario, 22010 - Località Ossuccio di Tremezzina (CO) - tel +39 0344 55211  
santuariobvsoccorso@libero.it - web [www.santuariobvsoccorso.blogspot.it](http://www.santuariobvsoccorso.blogspot.it)  
Comune di Tremezzina - Via P. Peduzzi, 6 - 22016 Tremezzina (CO)  
tel +39 0344 5583900 - fax +39 0344 41066  
info@comune.tremezzina.co.it - [www.unionetremezzina.it](http://www.unionetremezzina.it)

SITE OWNER: Ecclesiast Association

#### SERVICES

**Holy Mass Schedule:** From Easter through end of September: from Mon to Fri 5.00 p.m. - Sat and Sun 10.30 a.m. From October through Easter: from Mon to Fri 4.00 p.m. - Sat and Sun 10.30 a.m. Every third Saturday of the month "prayer pilgrimage for the vocations" meeting point at the first Chapel at 7.00 a.m.

**Parking area, Picnic area**

**Hotels and Restaurants**

**Bar - Trattoria del Santuario** - Via Santuario, 50 - 22010 loc. Ossuccio - (Tremezzina CO)  
tel +39 0344 56311 - tel +39 335 6289629 - [trattoriasantuario@alice.it](mailto:trattoriasantuario@alice.it) - Camere: NO  
**Crotto la Sorgente** - Via P. Castelli, 5 - 22010 loc. Ossuccio (Tremezzina - CO)  
tel +39 0344 55270 - tel +39 338.9246265

[info@crottolasorgente.com](mailto:info@crottolasorgente.com) - web: [www.crottolasorgente.com](http://www.crottolasorgente.com) - Camere: NO

**Locanda Garzola** - Via G. Castelli, 30 - 22010 loc. Ossuccio (Tremezzina - CO) - Camere: SI  
tel +39 0344.55379 - [bbgarzola@locandagarzola.it](mailto:bbgarzola@locandagarzola.it) - [www.locandagarzola.it](http://www.locandagarzola.it)

**Tourist Office** - Infopoint Antiquarium di Ossuccio

Via Somalvico, Tremezzina - tel +39 0344 56369  
[info@isola-comacina.it](mailto:info@isola-comacina.it) - [www.isolacomacina.it](http://www.isolacomacina.it)

#### ENTE DI GESTIONE DEI SACRI MONTI



Ente di gestione dei Sacri Monti (legal seat)  
Documentation Centre of the European Sacred Mounts, Calvaries and Devotional Complexes  
Cascina Valperone, 1 - 15020 Ponzano Monferrato (AL)  
tel +39 0141 927120 - fax +39 0141 927800  
[info@sacri-monti.com](mailto:info@sacri-monti.com) - [www.sacri-monti.com](http://www.sacri-monti.com) - [www.sacrimonti.net](http://www.sacrimonti.net)

Sacri Monti - Official #sacrimontisocial

#### SACRI MONTI DI PIEMONTE E LOMBARDIA - UNESCO WORLD HERITAGE



# Sacro Monte di Ossuccio



Photo B. Colombo

## HISTORY

Situated on the western shore of the Lake of Como, the Sacro Monte di Ossuccio has notable scenic value. The devotional complex sits on a slope immediately behind the town of Ossuccio (425 m. a.s.l.), opposite to Comacina Island, in a splendid panoramic position on the lake. Construction of this Sacro Monte began in 1635 at the XVI century sanctuary of the Madonna del Soccorso. The founders or promoters are unknown, but the devotional complex seems to have been undertaken by initiative of the Franciscans and the local noble families. The Sacro Monte consists of fifteen chapels, dedicated to the Mysteries of the Rosary, built between 1635 and 1710. The chapels are distributed along the ascending path that leads to the sanctuary of the Madonna del Soccorso, inside which is the last aedicula. The group of chapels, surrounded by nature and connected by a paved road that passes through olive orchards, confers the complex great harmony between architecture and the surrounding landscape. The construction lines vary, including rectangular baroque and central-layout chapels. The colonnades represent a unique architectural feature, supported by thin columns and extending along the road for its entire width and creating a close tie between the itinerary and the single aediculae. The Sacro Monte is populated by two hundred and thirty statues in stucco and terracotta. We know from documentation that the



**SACRO MONTE DI OSSUCCIO**  
Surface area: 14,66 hectares  
Elevation: 280-425 metres  
Environment: mountains

stucco sculptures were created by Agostino Silva while the frescoes were painted by Carlo Gaffuri, Innocenzo Torriani and Gian Paolo Recchi. However, there is no documentation regarding the authors of the first four chapels (the Annunciation, the Visitation, the Nativity, and the Presentation at the Temple).



Photo M. Lenzi



Photo M. Lenzi



Photo M. Lenzi



Photo B. Segattini

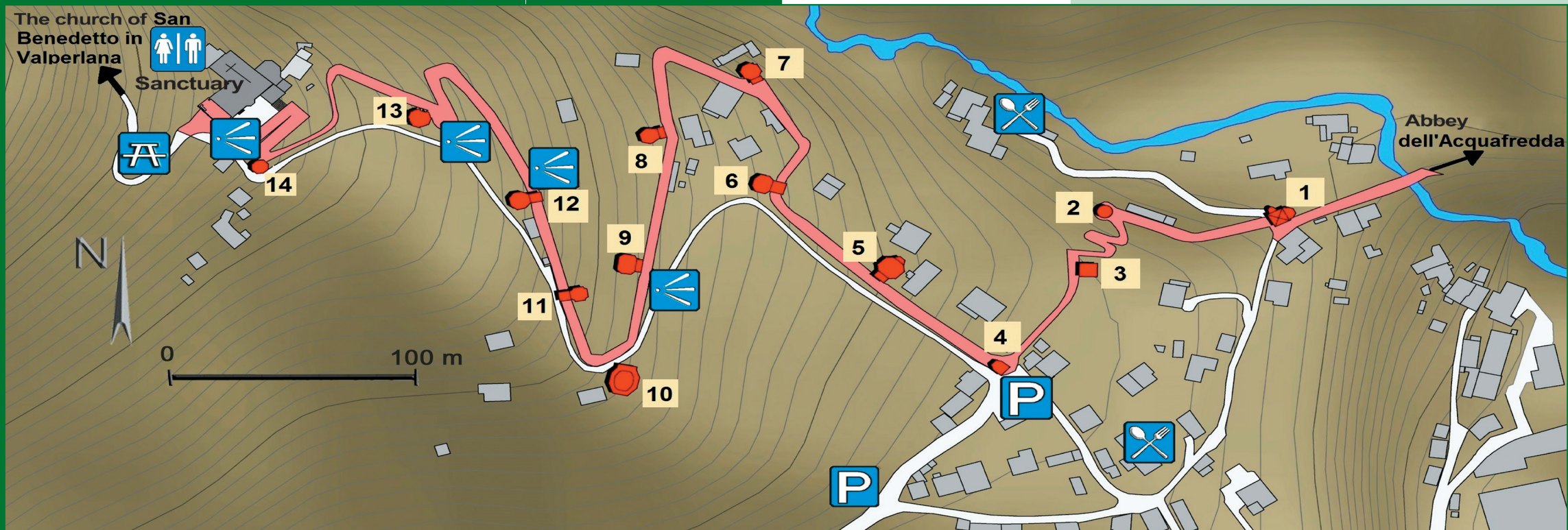
## SACRI MONTI UNESCO WORLD HERITAGE

"The nine *Sacri Monti* of Northern Italy are groups of chapels and other architectural handmade works built between the XVI and XVII century dedicated to different aspects of the Christian faith. Besides their symbolic and spiritual meaning, they feature notable characteristics of beauty, virtue and charm as they blend in with natural and scenic environments of hills, woods and lakes. They also contain very important artistic remains (frescoes and statues)". This is the motivation according to which in 2003 UNESCO included the "Sacri Monti di Piemonte e Lombardia" site in its World Heritage List. This prestigious acknowledgement confers universal value to seven *Sacri Monti* of Piedmont (Belmonte, Crea, Domodossola, Ghiffa, Oropa, Orta and Varallo) and two of Lombardy (Ossuccio and Varese), highlighting the extraordinary richness, qualities and values of these historical, artistic and nature gems. The chapels series depicts episodes and mysteries of sacred life through statues, paintings and frescos while blending in with the embracing environment and contributing in defining the features of each monumental complex. *Valuable examples of landscape architecture, the Sacri Monti represent an important meeting point for believers and lovers of art.* First arising on the western Alps, where this phenomenon originated more than five hundred years ago, the *Sacri Monti* then inspired similar models in many parts of Catholic Europe. The seven *Sacri Monti* of Piedmont are part of the protected area system of Regione Piemonte which provides for historical and artistic preservation, maintenance and protection of the surrounding environment.

Photo M. Lenzi



Photo M. Lenzi



Cartography by Università degli Studi di Genova - Polytechnic School - D.S.A. Department

## THE CHAPELS

**Chapel 1 - L'ANNUNCIAZIONE (THE ANNUNCIATION)** - There is no known date for its construction, but it was probably built during the fifth decade of the XVII century, on an octagonal plan and financed by Canon Giovanni Bartolomeo Salice di Campo. The artists working on its project are anonymous; it is believed that the two sculptures representing the Madonna and the archangel Gabriel are by Francesco Silva or Cristoforo Prestini.

**Chapel 2 - LA VISITAZIONE (THE VISITATION)** - The construction date is unknown, but it was probably built in the fifth decade of the 17th century. The form is circular and the build was financed by the Sanctuary. Its four statues represent Mary, Joseph, Elizabeth and Zachary. The artists are anonymous, although due to resemblances to Varese, it has been theorized that the artist responsible for the group of sculptures is Francesco Silva.

**Chapel 3 - LA NATIVITÀ (THE NATIVITY)** - The construction date is unknown, but it probably was built in the fifth decade of the XVII century. It features a square shape and was financed by the Sanctuary. It houses nine statues, six angels and five animals, perhaps work of Francesco Silva.

**Chapel 4 - LA PRESENTAZIONE (THE PRESENTATION)** - Stands in the small square of Garzola where the roads from Lenno and Ossuccio intersect. It features a composite square plan with a trapezoidal termination and houses seven statues that are somewhat smaller, work of an anonymous artist, perhaps of Nordic origin given their stiff and rigid style

**Chapel 5 - LA DISPUTA (THE DISPUTE)** - Dating between 1683 and 1688, it stands on an octagonal plan and is one of the richest and most important chapels. Inside are twenty-one statues and two animal figures, probably the work of Agostino Silva. Most striking is the unity of the scene itself, with all the statues standing in a circle around the 12-years-old Jesus.

**Chapel 6 - L'ORAZIONE (THE ELOQUENCE)** - Construction works began in 1680. The octagonal layout features on the front a colonnade which extends like an awning over the road and is characterized by two pillars fitting into the bordering wall. It is home to four statues by Agostino Silva, possibly executed with the help of his son, Giovanni Francesco. The frescoes are the work of Francesco Innocenzo Torriani and the entire chapel was financed by the Brentano Moretto di Azzano brothers whose coat of arms, sculpted in stone, can be seen on the façade.

**Chapel 7 - LA FLAGELLAZIONE (THE FLAGELLATION)** - Begun in c. 1680, it features an octagonal plan and contains seven statues by Agostino Silva. The chapel was financed by the nobleman Tommaso Gilardoni and Volesio who coat of arms can be seen on the façade.

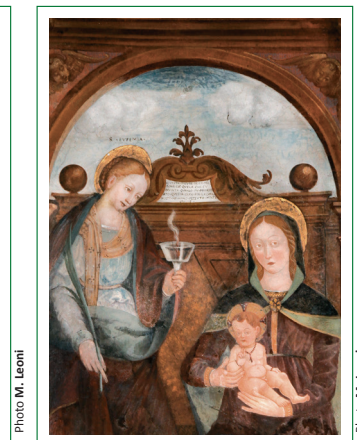
**Chapel 8 - L'INCORONAZIONE (THE CROWNING)** - Construction started in 1666. A few steps lead to the octagonal structure. Inside are six statues by Agostino Silva and frescoes by Carlo Gaffuri. The Gilardoni di Volesio family financed the chapel.

**Chapel 9 - IL CALVARIO (THE CALVARY)** - Built between 1663 and 1667. Its octagonal shape contains nineteen statues with two horses and a dog by Agostino Silva. It was commissioned and financed by Andrea Cetti di Lenno, Master of the Mint for Leopold I of Habsburg.

**Chapel 10 - LA CROCISSIONE (THE CRUCIFIXION)** - Construction works started in 1669, commissioned by Andrea Cetti di Lenno. This is the most important and most valuable of the chapels for its size and number of statues by Agostino Silva. The building has a central layout on an octagonal plan and houses thirty-five character statues, five angels, four horses and a dog. The frescoes are by Giovanni Paolo Recchi and Carlo Gaffuri.

**Chapel 11 - LA RESURREZIONE (THE RESURRECTION)** - Started in 1664, commissioned by Bernardo Brentano di Azzano, the island's canon. Its octagonal shape houses seven statues by Agostino Silva: Christ resurrected, five soldiers standing guard over the sepulchre and an angel.

**Chapel 12 - L'ASCENSIONE (THE ASCENSION)** - Built in 1663 and commissioned and paid for entirely by Andrea Cetti di Lenno. It houses sixteen statues and thirteen angels sculpted by Agostino Silva. The octagonal layout and the walls are completely decorated with frescoes by Giovan Paolo Recchi.



**Chapel 13 - LA DISCESA DELLO SPIRITO SANTO (THE DESCENT OF THE HOLY SPIRIT)** - Built in 1664, it contains fifteen statues and seventeen angels by Agostino Silva as well as frescoes attributed to Giovan Paolo Recchi. The octagonal chapel is decorated with arches majestically framing panoramic views.

**Chapel 14 - L'ASSUNZIONE (THE ASSUMPTION)** - Construction works started in 1665, financed by the town of Sala. The thirteen sculptures and nine angels are attributed to Agostino Silva. The octagonal building contains twenty-two sculptures located in the central area. In the Assumption two distinct scenes are depicted, an earthly scene and one in the kingdom of heaven.

**Chapel 15 - L'INCORONAZIONE DI MARIA ALL'INTERNO DEL SANTUARIO DELLA MADONNA DEL SOCCORSO (THE CORONATION OF MARY INSIDE THE SANCTUARY OF THE MADONNA DEL SOCCORSO)** - Built in 1500s, the interior was decorated during the following century. The main altar is home to the fifteenth and last chapel of the Rosary. It features a group of wooden sculptures by G. Vecchi, created at the end of the XIX century which depicts the coronation of Mary. In the northern wing of the Sanctuary is the Madonna's Chapel which houses the greatly venerated statue of the Holy Virgin dating back to early XIV century.

- Viewpoint
- Parking
- Restaurant



LINK

Azienda di Promozione Turistica della Provincia di Como  
www.lakecomo.com

Cultural site of Regione Lombardia  
www.lombardiacultura.it

Ente di Gestione dei Sacri Monti  
info@sacri-monti.com - www.sacri-monti.com - www.sacrimonti.net

Unesco Italy - www.unesco.it

